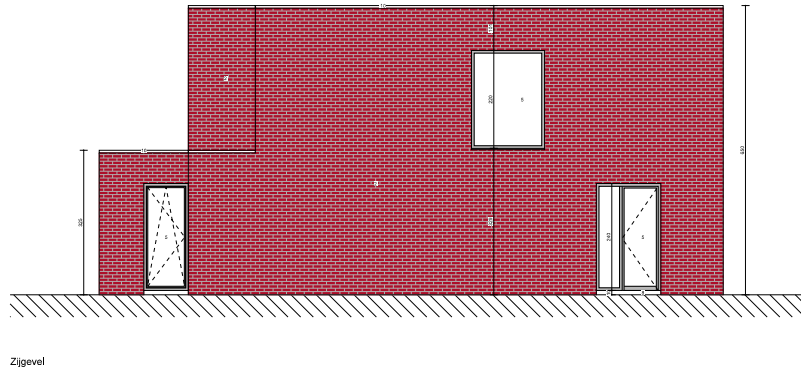
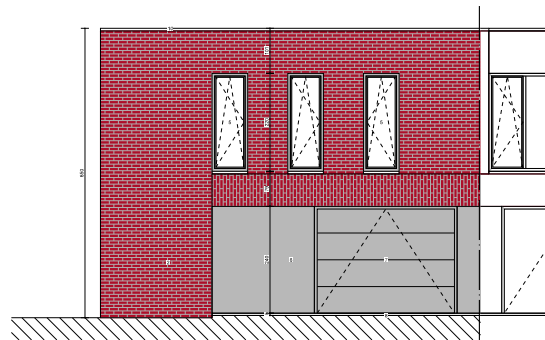


Inplanting



Zijgevel



Voorgevel



Achtergevel

**RDS**  
CONSTRUCT



HAVIS



Oppervlakte kelder:  
41m<sup>2</sup>



Bruto bovengrondse oppervlakte:  
202m<sup>2</sup>



Oppervlakte perceel:  
575m<sup>2</sup>



2 Badkamers

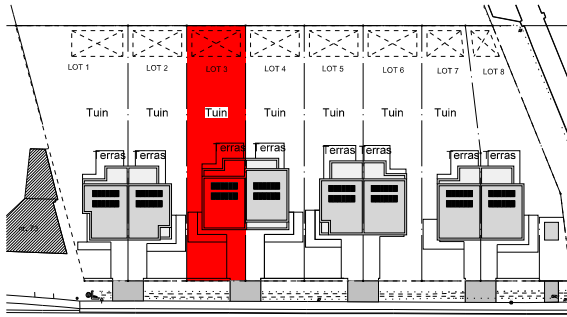


4 Slaapkamers.

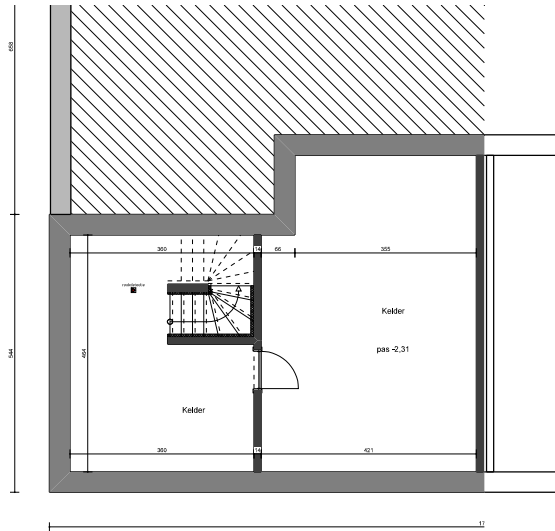
**LANDINI**<sup>(L)</sup>  
LOT 3

De ingetekende indeling is indicatief en niet bindend. Alle vermelde oppervlaktes zijn bruto oppervlaktes. Plannen, positie en omvang van schachten, nutsleidingen en dragende elementen onder voorbehoud van stabiliteitsstudie en studie technieken. Alle 3D beelden, meubilair, keukens en (sanitaire) toestellen zijn louter ter presentatie. Aan deze tekeningen kunnen geen rechten worden ontleend.

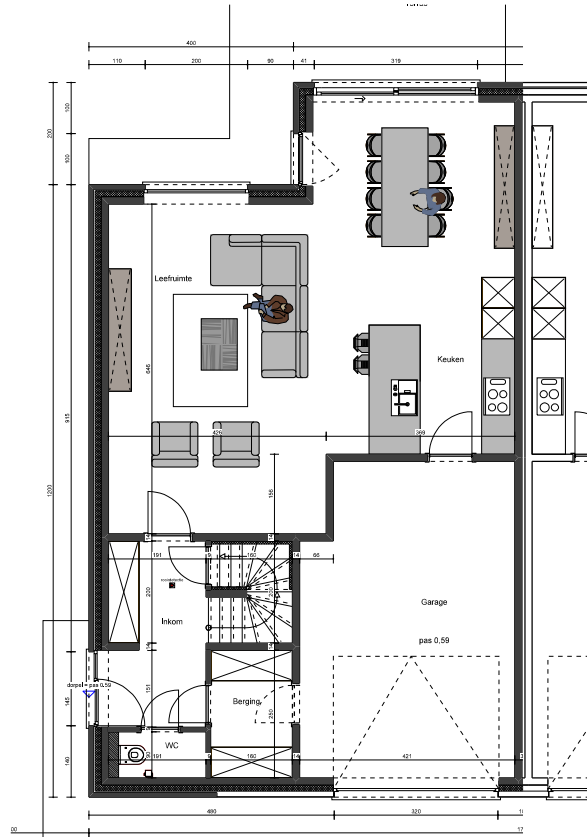




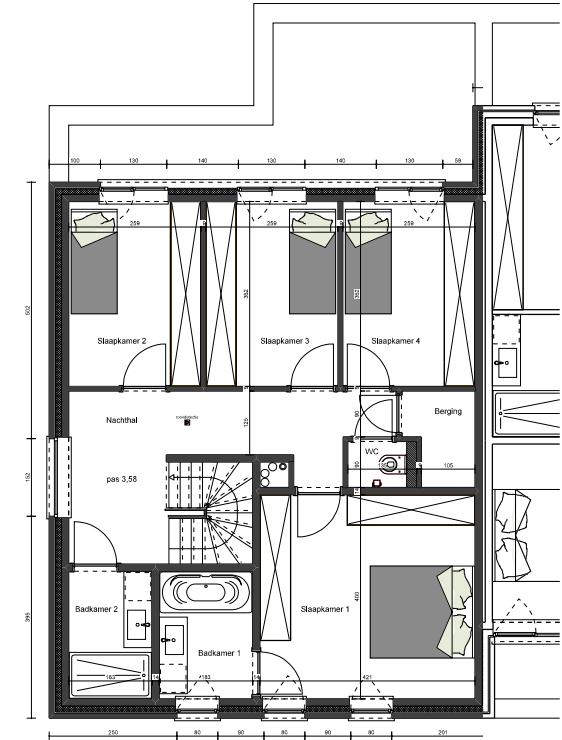
Inplanting



Kelder



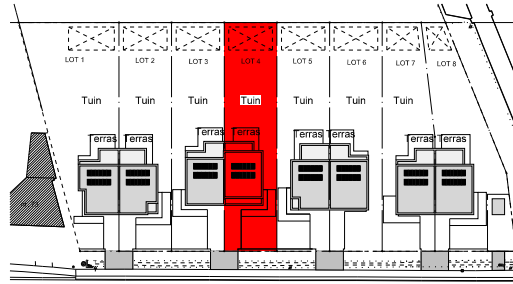
Begane grond



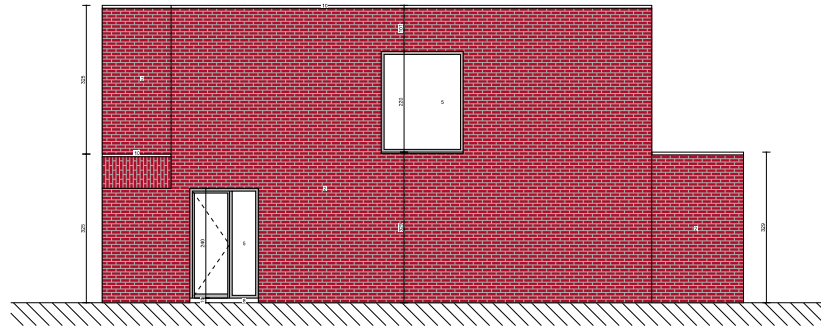
Verdieping +1

**LANDINI** <sup>Ⓛ</sup>

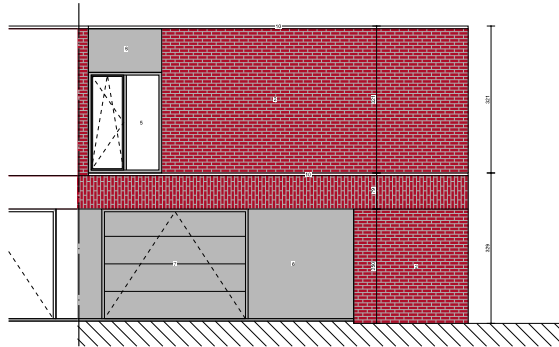
LOT 3



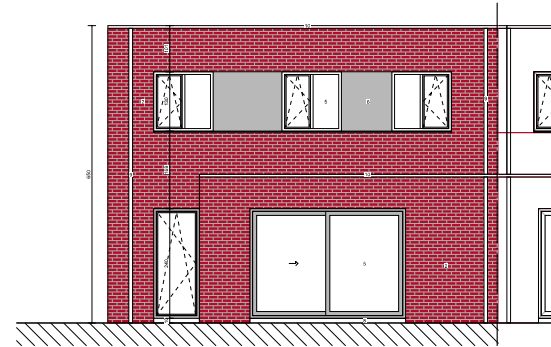
Inplanting



Zijgevel



Voorgevel



Achtergevel



Oppervlakte kelder:  
42m<sup>2</sup>



Bruto bovengrondse oppervlakte:  
205m<sup>2</sup>



Oppervlakte perceel:  
575m<sup>2</sup>



2 Badkamers

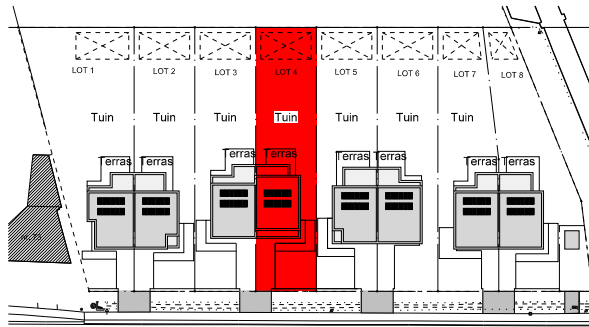


4 Slaapkamers.

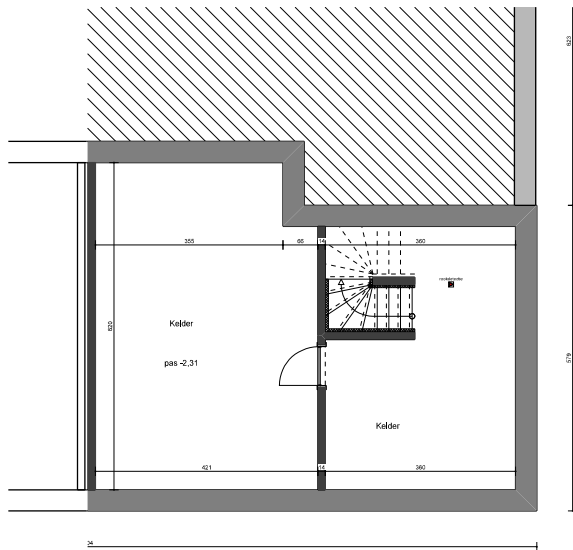
**RDS**  
CONSTRUCT



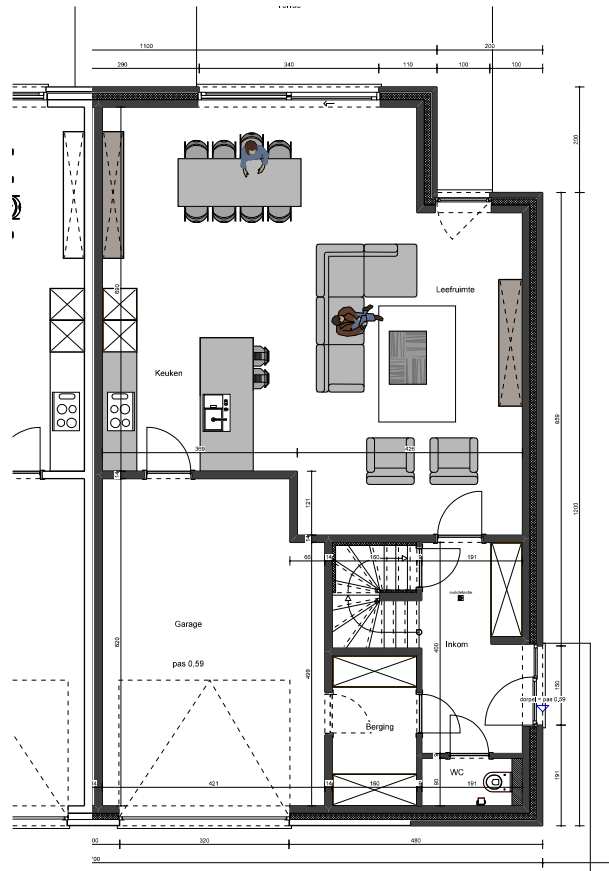
HAVIS



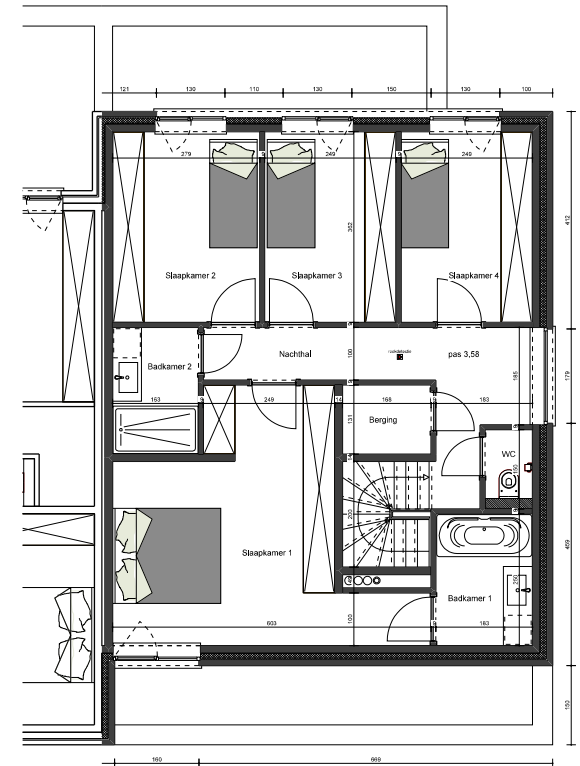
Inplanting



Kelder



Begane grond



Verdieping +1

# LANDINI <sup>L</sup>

## LOT 4